



Weekly Newsletter

Your weekly newsletter about our school!

If it is to be, it is up to me

This week at School

Dear parents and carers,

We hope that all our children, families, and staff had a wonderful, restful Easter break.

It has been lovely to see the children return this week with such enthusiasm and bright smiles. They have settled straight back into their routines, and the classrooms are already buzzing with learning and creativity.

As we step into the Summer Term, we are looking forward to lighter mornings, warmer days, and lots of exciting events to come.

We would like to give a huge well done to the new children who have joined our Nursery this week! Starting nursery is a big milestone, and we have been incredibly proud of how bravely our new starters have tackled their first few days. It has been wonderful getting to know their little personalities as they explore the learning environment, make new friends, and get to grips with the daily routines.

Our Summer Term after school clubs will officially begin next week. There are a few places still available. Please secure a space via Arbor.

We hope you have a lovely weekend and we look forward to seeing you all next week.

Best wishes, Mrs Wilson



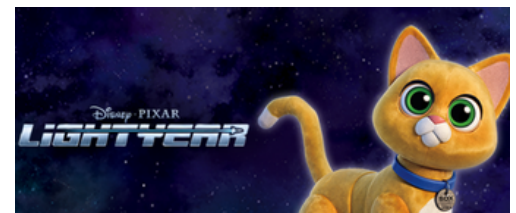
This weeks 'Active 5'



Can you try this activity at home for 5 minutes..

<https://www.nhs.uk/healthier-families/activities/10-minute-shake-up/lightyear/sox-protects-the-fuel-cell/>

Please send in photos to your class teacher to be awarded dojs.



Wellbeing Weekly

Please see the links below for support and advice which we hope you may find interesting/useful:

- Cedars Family Hub in Hemsworth offer all different kinds of resources and services to help families thrive: https://www.facebook.com/CedarsFamilyHub/?locale=en_GB
- Fun digital therapy for childhood anxiety <https://luminova.app/>
- The Food Pantry also has a facebook page: <https://hemsworthfoodpantry.org.uk/>
- An online resource for children and young people in Wakefield WF-I-CAN: <https://wf-i-can.co.uk/>
- NSPCC www.nspcc.org.uk/advice-for-families/?utm_old=supportparents
- Growing Healthy 0-18 support available for parents and schools: hdfchildrenshealthservice.co.uk

Attendance

Summer

The whole school attendance for this week **97%**

Reception **95%**
 Year 1 **100%**
 Year 2 **98%**
 Year 3 **95%**
 Year 4 **98%**
 Year 5 **99%**
 Year 6 **98%**

Excellent Attendance is 97% and above. Well done to year 1, 2, 4, 5 & 6

Word of the week:

Innovation



Visit our Website

www.grovelea.ipmat.co.uk



Upcoming Dates:

If it is to be, it is up to me

Reminders for parents (please see dojo for further details)

Assessments - It is extremely important your child is present on these days. They will be marked as ungraded if absent or on holiday during this time

Y1 Phonics Week commencing the 8th June

KS1 SATs are optional – the school will be assessing children throughout June

Y4 Multiplication Check Week commencing the 8th June

KS2 (Y6) SATs begin Monday 11th May- Thursday 14th May

Transition meetings for parents. These will all start at 4pm:

Nursery Children moving to Full time Reception	Monday 15 th June
Reception moving to Year 1	Monday 22 nd June
Year 2 moving to Year 3	Monday 29 th June
Transition Day- Y6 to Hemsworth High School and children in school moving to next class for the day	TBC

Concerts:

Summer Production Y6	Friday 17 th July at 2.00pm (Leavers disco will also be this date)
----------------------	--

Sports Days (Weather dependent):

EYFS	Monday 20 th July 9.30am Reception 10.30am Morning Nursery 2.00 pm Afternoon Nursery
KS2	Tuesday 21 st July at 9.30am
KS1	Tuesday 21 st July at 2.00pm

PE Days Summer Term

Monday	Tuesday	Wednesday	Thursday	Friday
Year 1 Year 2 Year 5	Year 3 Year 6	Reception Year 5 Year 6	Nursery Year 4	Year 1 Year 2 Year 4 swimming Year 3

Please note that Nursery and Reception children do not require a PE kit for their sessions



TUCK SHOP FRIDAY

Our tuck shop is open in the hall from 3:20pm on Friday.
There will be sweets, crisps, popcorn and drinks available. All 50p each.



Wider Achievements

If it is to be, it is up to me



Dean has been in Cumbria racing.
He did really well and bagged himself a trophy!

Well done Dean!



Bobbi riding Scooby looking very professional!



Eleanor completed her first gymnastics competition and competed
in 4 different areas. She placed 2nd, 3rd, 4th and 5th.

Well done Eleanor!



**Athena on completing stage 2 at
swimming. Well done Athena!**



**Congratulations to Elizabeth on passing her 10m at
swimming. Well done on your swimming progress!**



SEND Maths

Parent Workshop

All are welcome to attend our planned sessions to work alongside our SENDCO to support you with all SEND related queries.

All hosted in Grove Lea Primary School

INFORMATON



Tuesday 19th May 2026 at 2pm

Come and look at the different ways that you can support your child to access early math skills at home and different ways that you can engage them to apply their knowledge of number, shape and measures.

Use this opportunity to come and work with your child and complete a range of activities together. Refreshments will be provided on entry.